

PHOTOSHOP PATTERNS

A CREATIVITY TOOL

WHAT ARE PHOTOSHOP PATTERNS?

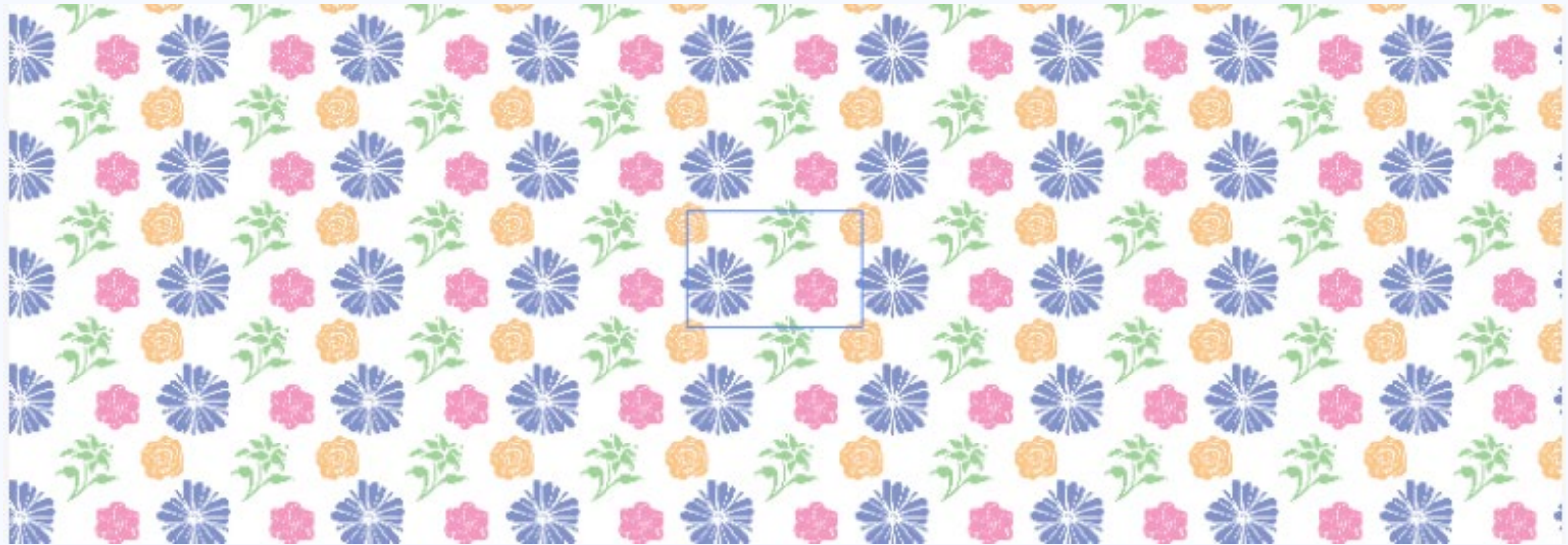
1. A pattern is an image that is repeated, or *tiled*, when you use it to fill a layer or selection.
2. Photoshop comes with various preset patterns.
3. You can create new patterns and save them in libraries for use with different tools and commands.
4. Preset patterns are displayed in pop-up panels in the options bar for the Paint Bucket, Pattern Stamp, Healing Brush, and Patch tools, as well as in the Layer Style dialog box.
5. You can change how patterns are displayed in the pop-up panels by choosing a display option from the pop-up panel menu.
6. You can also manage pattern presets using the preset manager.

WHERE ARE PHOTOSHOP PATTERNS LOCATED?

Where do I find the Patterns panel?

- Select Window, Patterns

SAMPLE PHOTOSHOP PATTERN

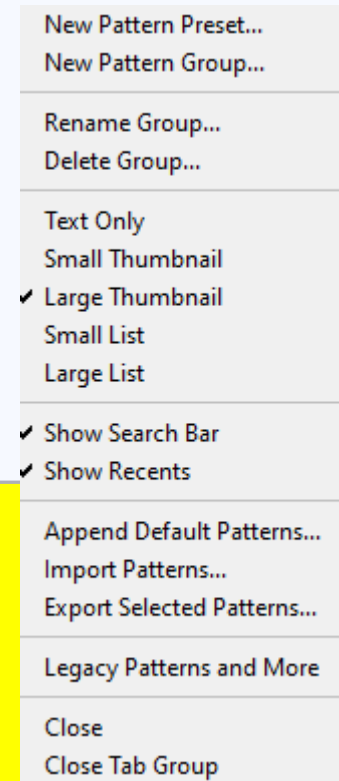


SAMPLE PHOTOSHOP PATTERN

Here is a sample shown zoomed in and zoomed out.



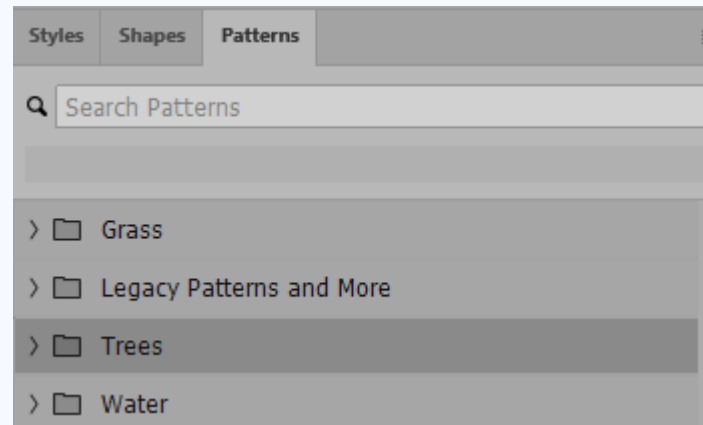
PHOTOSHOP PATTERNS MENU



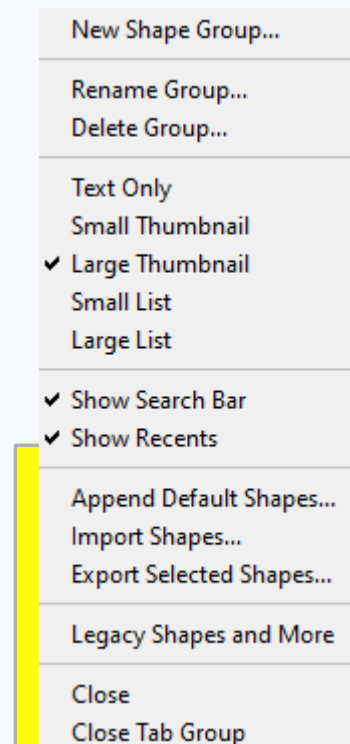
Additional
actions
available.

PHOTOSHOP PRESET PATTERNS (.PAT)

Several preset patterns are built into Photoshop.



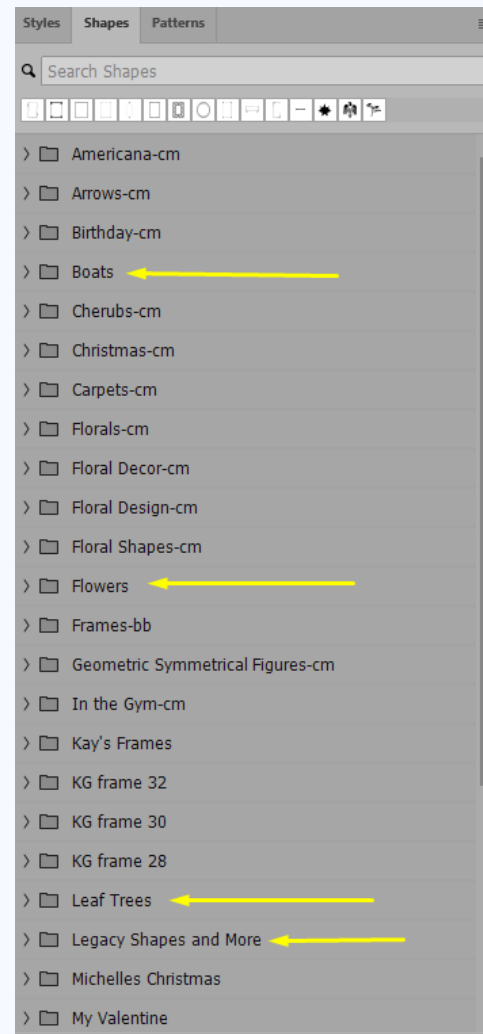
PHOTOSHOP SHAPES MENU



Additional
actions
available.

PHOTOSHOP PRESET SHAPES (.CSH)

Several preset shapes are built into Photoshop.



LINKS: HOW TO CREATE PATTERNS

- [Create a seamless repeating pattern easily using Pattern Preview](#)
- [Pattern Preview](#)
- [Manage pattern libraries and presets](#)
- [Bring your patterns to life using mockup templates](#)

Resources for patterns:

- [Brusheezy](#) (a good source for patterns)
- [Adobe Stock](#)